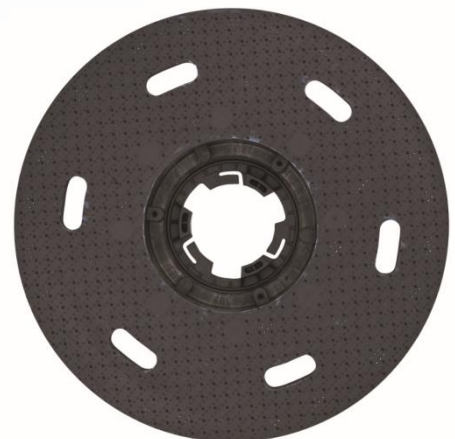


ROMUS[®]

QUATTRO BOOST MONOBROSSE 94450

INSTRUCTIONS FOR USE



CONTENTS

1. GENERAL	3
INFORMATION ABOUT THESE USER INSTRUCTIONS	3
MANUFACTURER	3
LIABILITY AND WARRANTY	3
KEY TO PICTOGRAMS ON THE MACHINE	4
2. THE "4D" MONOBROSSE	5
3. TAKING DELIVERY OF THE MACHINE	5
4. STORAGE	5
5. TRANSPORT	5
6. OVERVIEW	6
7. PREPARATIONS FOR USE	7
ELECTRICAL CONNECTION INSTRUCTIONS	7
CABLES, EXTENSIONS AND PLUGS	7
INSTRUCTIONS FOR FITTING THE EXTRACTION SKIRT	7
INSTRUCTIONS FOR FITTING THE EXTRACTION SYSTEM	8
INSTRUCTION FOR ADJUSTING THE HANDLE ANGLE	8
INSTRUCTIONS FOR FITTING THE PLATE	9
INSTRUCTIONS FOR FITTING ABRASIVE DISCS ON THE 4D PLATE	9
8. RECOMMENDATIONS FOR PREVENTIVE MEASURES TO BE TAKEN BY THE USER	10
PERSONAL PROTECTION EQUIPMENT	10
COMPLIANCE WITH PROTECTIVE MEASURES AND DANGER SIGNALS	10
INSTRUCTIONS FOR THE CORRECT USE OF THE MACHINE	12
9. MACHINE CHARACTERISTICS	12
10. DESCRIPTION OF HOW TO SET UP THE MACHINE FOR USE	12
INTRODUCTION	12
STARTING THE MACHINE	13
11. PERIODIC MAINTENANCE	13
WHEELS (FOR THE ATTENTION OF THE USER)	13
BEARINGS (FOR THE ATTENTION OF THE AFTER-SALES DEPARTMENT ONLY)	13
12. REPLACEMENT PARTS	13
13. AFTER-SALES SERVICE	13
14. EMERGENCY SITUATIONS (FOR THE ATTENTION OF THE USER)	14

Danger: means Serious injury or death of the operator or someone else if the hazard warnings on the machine or in the manual are ignored or not followed. Read and follow all the DANGER warnings on the machine or in this manual.

Warning: means Injury to the operator or someone else if the WARNINGS on the machine or in this manual are ignored or not followed. Read and follow all the WARNINGS on the machine and in the manual.

Caution means An injury that could affect the operator or someone else if the CAUTION notices on the machine or in the manual are ignored or not observed. Read and observe all CAUTION notices on the machine and in the manual.

GENERAL

INFORMATION ABOUT THESE USER INSTRUCTIONS

The user manual is an important source of information and a reference work for personnel when setting up and using the equipment. It allows work to be carried out safely and in accordance with the equipment's capabilities.

The prerequisite for that is knowledge of the safety aspects to observe when setting up, using and maintaining the equipment. Consequently, when reading the user manual, you should start with the chapter on "Safety". The other main points for information to personnel are the chapters which follow. To avoid handling errors, this instruction manual should be kept close to the equipment and be accessible to personnel at all times. Accident prevention instructions and general safety information MUST be followed when using the equipment.

Note: Diagrams of the equipment appearing in these use instructions may differ slightly from the model supplied.

LIABILITY AND WARRANTY

Any claim must include details on the use of the item and the date of purchase. For machines, the warranty covers parts and labour after return to Romus.

Liability is limited only to the goods supplied by Romus and does not apply to any damage, injuries or loss of income caused by a defective component.

The use of goods supplied by Romus must comply with the manufacturer's technical recommendations. All our products have a traceable source of supply. It is the customer's responsibility to ensure that this condition meets the requirements of the final destination of the goods purchased.

Goods sold are warranted free of any operating defect due to a material, manufacturing or design faults for a period of one year from the date of invoice, subject to the customer using the product in the prescribed way.

The warranty therefore does not apply if the product is modified, if there is negligent use or a maintenance failure by the customer.

Products returned under warranty will be quality controlled before any decision is taken.

Representations in texts and drawings do not necessarily correspond to the item delivered. Drawings and figures are not to a 1:1 scale.

This instruction manual should be read carefully before use.

Passing this instruction manual to a third party is prohibited. Compensation may be demanded in the event of failure to comply with this clause.

LEGENDE DES PICTOGRAMMES PRESENTS SUR LA MACHINE



READ THE INSTRUCTIONS IN THE USER AND MAINTENANCE MANUAL BEFORE USE



IT IS ADVISABLE TO WEAR HEARING PROTECTION WHEN USING THE MACHINE



IT IS ADVISABLE TO WEAR BREATHING PROTECTION WHEN USING THE MACHINE



DANGER. ELECTRIC CURRENT



DANGER. MOVING PARTS

2. THE "QUATTRO BOOST" MONOBROSSE

The "QUATTRO BOOST" Monobrosse is a simple-to-use machine, intended for professional use. The machine is designed to sand wood floors, flatten concrete, etc.

It works with all types of plate available on the market. Supplied with a base with an orbital sanding plate, the quarter-turn attachment system allows the plate to be changed in less than a minute.

3. TAKING DELIVERY OF THE MACHINE

First check the contents of the machine. Contact your local supplier if there are parts missing.

The parts supplied are as follows:

- 1 user manual,
- 1 QUATTRO BOOST Monobrosse,
- 1 orbital sanding plate without abrasives,
- 1 extraction skirt
- 1 spike plate

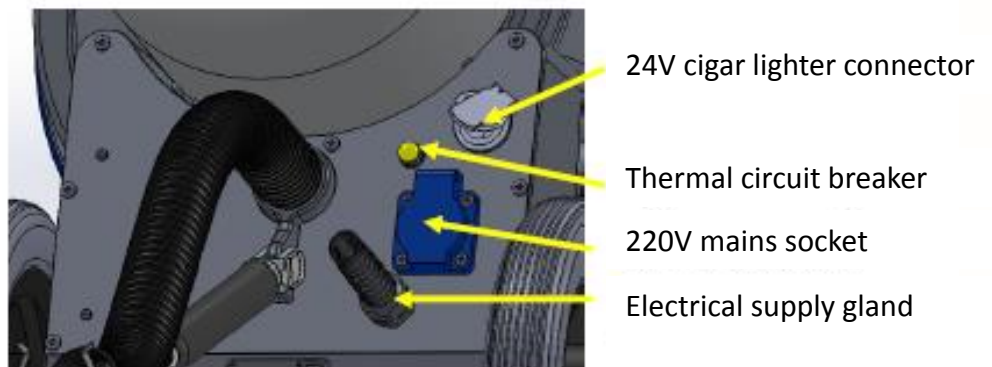
4. STORAGE

It is recommended that the machine is stored in its original packaging. If the machine is removed from its packaging and is not used for a considerable time, ensure that at least the wheels and the plate are not in contact with the floor. Place the machine on supports at least 50 mm high, taking care that the machine's frame rests on them. Store the machine in a dry building where there is no risk of it being damaged. Storage temperature: -20°C to 50°C.

5. TRANSPORT

Warning: The machine is quite heavy. However, it can be transported easily on its two large-diameter wheels. There are two handles on the frame, so that it can be carried if necessary.

6. VUE D'ENSEMBLE



Note: the Monobrosse is fitted with a 24V cigar lighter connector, for connecting an optional lamp or mobile phone charger.

Note: the Monobrosse is also fitted with a 220V mains socket for powering other light electrical equipment (edge sander, vacuum cleaner, etc.).

7. PREPARATIONS FOR USE

ELECTRICAL CONNECTION INSTRUCTIONS

Caution: This machine operates only on the voltage and frequency indicated on the plate fixed to the machine. Before you connect the cable to the mains supply, ensure that the available voltage and frequency are correct.

Danger: Do not expose the machine to water or rain or you could risk death from electrocution. Use and store the machine in a dry building.

Danger: Connect the machine to the electrical system correctly, to avoid the risk of death from electrocution. To prevent any risk of electrical discharges, use a phase, neutral and earth system. To obtain the maximum protection against electrical discharges, use a circuit protected by a differential circuit breaker.

Danger: Do not use the machine if the plug or mains cable is damaged, to avoid the risk of death from electrocution. If the cable or plug is worn or damaged, have it replaced by the manufacturer or Romus after-sales service or, in any event, by a similarly qualified person, so as to prevent any risk.

CABLES, EXTENSIONS AND PLUGS

Use only approved cables with three 2.5mm² conductors, i.e. phase, neutral and earth. The maximum recommended length for an extension cable is 12.50m; for lengths in excess of 12.50m, use larger cross sections.

Danger: Do not use the machine with cables of insufficient cross-section and/or too long; doing so could cause personal injury or damage to property.

MACHINE WITH 230V SINGLE PHASE MOTOR ~50-60Hz For Europe, the mains cable must be type E/F, CEE approved, designation EEC 7/7-3 x 2.5mm²

INSTRUCTIONS FOR FITTING THE EXTRACTION SKIRT

Danger: Never use the machine when not fitted with its special extraction system or if that system is not working. Wood dust is a health hazard and can cause disease.

Danger: Wear a properly fitted type FFP3 NR D breathing protection mask the entire time while carrying out the operation below.

Warning: The machine should be disconnected from the electrical system while this operation is carried out.

Danger: Sanding dust can ignite spontaneously and cause injury or damaged. Sanding dust should be conveniently removed as indicated in the procedure below.

Danger: Never use the machine when not fitted with its special extraction system or if that system is not working. Wood dust is a health hazard and can cause disease.

Danger: Wear a properly fitted type FFP3 NR D breathing protection mask the entire time while carrying out the operation below.

Note: The Monobrosse is supplied with a 38 mm diameter hose (standard in Europe).

To fit a dust extraction system, simply connect the system to the hose.

INSTRUCTION FOR ADJUSTING THE HANDLE ANGLE

Warning: The machine should be disconnected from the electrical system while this operation is carried out.

Warning: Correct adjustment of the handle angle has a direct influence on the quality of the machine's work.

Warning: Correct adjustment of the handle angle has a direct influence on machine handling and working comfort.

INSTRUCTIONS FOR FITTING THE PLATE

Warning: The machine should be disconnected from the electrical system while this operation is carried out.

1. Lay the machine down on its wheels.
2. Then identify the location of the notches on the gear and in the ring gear on the plate.
3. Position the plate on the machine taking care to align the previously identified notches.
4. If the plate is not correctly positioned, go back to step 2.
5. Make a quarter-turn movement to lock the plate in place.
6. Fit the indexing finger and lock it with a quarter turn, thus ensuring that the plate is secure in all



Gear notch

Ring gear



Indexing finger

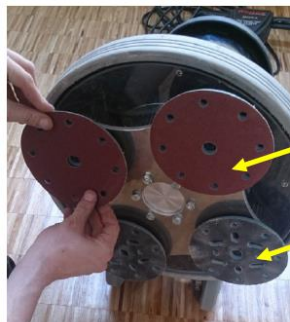
Note: The above example describes the fitting of a 4D plate but the system also adapts to the use of a spike plate or concrete plate.

INSTRUCTIONS FOR FITTING ABRASIVE DISCS ON THE 4D PLATE

Warning: The machine should be disconnected from the electrical system while this operation is carried out.

Warning: Fitting abrasive discs is made easier with the use of Velcro-backed discs. Use only 150 mm diameter "Norgrip" abrasive discs.

Warning: For the best quality of work, it is recommended that all four discs are changed at the same time.



Self-adhesive disc

Velcro base

8. RECOMMENDATIONS FOR PREVENTIVE MEASURES TO BE TAKEN BY THE USER

PERSONAL PROTECTION EQUIPMENT

Warning: Sanding dust can spread through the air and be breathed in during use of the sander. Always wear an FFP3 NR D protective mask against dust when using the sanding tool.

Warning: There is a risk of serious injury to the eyes and/or body, if you do not wear protective equipment and clothing when sanding. During any sanding operation, always wear safety glasses, protective clothing and a dust mask.

Warning: During any sanding operation, the intensity of the noise can cause hearing problems in cases of prolonged exposure. Always wear hearing protection during any sanding operation.

COMPLIANCE WITH PROTECTIVE MEASURES AND DANGER SIGNALS

Danger: Do not use the machine unless it is properly assembled; not doing so could cause personal injury and/or damage to property. Ensure that all locking parts are firmly in place. Ensure that machine is set up in accordance with the specifications.

Danger: Any use of the sander without guards and housings fitted and locked in place could cause personal injury and/or damage to property. Always ensure that all guards and housings are in place and properly secure.

Danger: Sanding wood floors can create an explosive environment. Cigarettes, cigars, pipes, lighters, pilot lights and any other source of fire could cause an explosion, if lit during sanding work. Sources of ignition should be kept well away from the work area.

Danger: Poorly ventilated work areas could cause an explosive environment if there are combustible materials in the atmosphere, such as solvents, thinners, alcohol, fuels, some paints, wood dust or any other combustible material. Floor sanders can cause combustible materials and vapours to ignite. Read the manufacturer's instructions for any chemicals used, in order to determine whether or not they are combustible. Ensure that the work area is always well ventilated.

Danger: Nails encountered during sanding can cause sparks. Always remove all nails before sanding surfaces.

Danger: If the breaker on the power circuit trips several times or if it is under-rated, there is a risk of death from electrocution. Have fuses, the protection circuit or the mains checked by a qualified electrician or by Romus after-sales.

Danger: Any maintenance and/or repairs made to a machine that is not properly disconnected from the mains could cause death by electrocution. Disconnect from the mains before carrying out any maintenance and/or repair operation.

Danger: Use of this machine on an unearthed circuit could cause death by electrocution. Never disconnect or render the earth cable ineffective. If there is no earth wire or if you have doubts about the correct earthing of the circuit, contact an electrician.

Danger: Do not use this machine if its mains cable is damaged or you could cause an electrical discharge. Do not use this machine if its mains cable is damaged. Do not pull on the electrical cable to move the machine.

Danger: Risk of personal injury or death by execution if the sander passes over a mains cable and damages it. Keep the cable away from the lower part of the machine to prevent any contact with the abrasive. Always hold the mains cable above the machine.

Danger: The moving parts in this machine could cause serious personal injury. Keep your hands, feet and loose parts of your clothing away from moving parts on the machine.

Danger: Failure to disconnect the machine from the mains before carrying out maintenance or replacing the transparent plastic bag or filter bag could cause personal injury to the operator or anyone nearby.

Warning: Read and follow all the instructions on the machine or in this manual; failure to do so could cause serious personal injury or damage to property. Read and follow all safety instructions. Ensure that all plates, stickers, warnings, precautions and instructions are fixed to the machine.

Caution: Do not allow repairs to be made by unqualified persons, since this could result in personal injury or damage to property.

Caution: The machine could be damaged by storing it in a damp building. Store the machine in a dry building.

INSTRUCTIONS FOR CORRECT USE OF THE MACHINE

This equipment is intended for professional use.

The information contained in this manual highlights the potential dangers to the operator and/or the machine. Read this manual carefully and become familiar with the machine, so as to understand situations where hazardous conditions could be present.

Take all necessary measures to provide instruction to personnel who will use the machine.

Immediately report any damage to the machine or anything that is not working as it should:

1. Keep hands and clothes away from rotating parts.
2. Keep your hands on the handles when the motor is running.
3. Do not walk away from the machine while the motor is running.
4. Do not operate the machine without its extraction skirt and/or abrasive discs.
5. Always use an extraction system and ensure that it is switched on when the machine is in use.
6. Do not remove the extraction system while the motor is running.
7. Always disconnect the machine from the mains before doing any maintenance.
8. The machine should be transported with care on its two wheels.
9. Always carry the machine by its two handles.
10. Always use the machine in a well ventilated environment.
11. Never handle sanding dust.
12. Use the abrasive discs supplied with the equipment or the type specified in the instruction manual.

10. DESCRIPTION OF HOW TO SET UP THE MACHINE FOR USE

To switch on the machine, follow the steps below:

1. Familiarise yourself with the machine and read all the instructions concerning dangers, warnings and precautions to be taken. Ensure that all operators have read this manual.
2. Fit the extraction system as indicated in the section, "INSTRUCTIONS FOR FITTING THE EXTRACTION SYSTEM".

Warning: The machine should be disconnected from the electrical system while this operation is carried out.

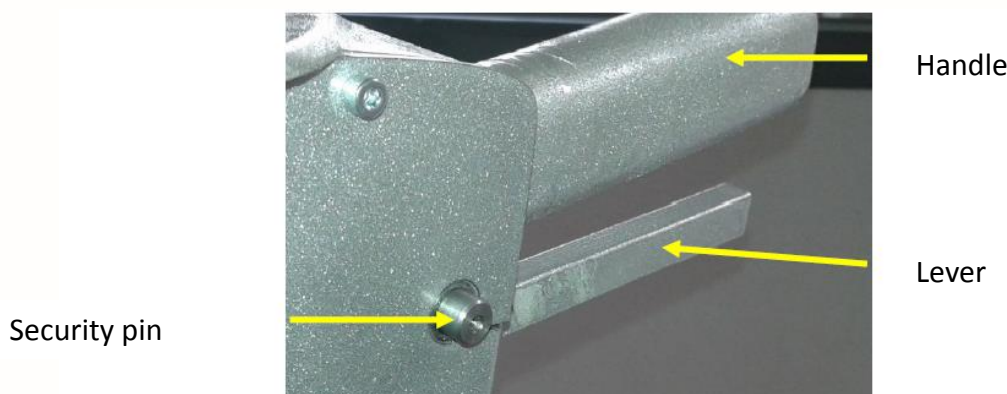
3. Locate the electrical supply. The socket must be compatible with the plug. To avoid any electrical danger, the socket must be earthed and protected by a fuse.

Warning: The fuse should be 16A for the 2.2kW motor.

STARTING THE MACHINE

Caution: Check that the extraction system is correctly positioned on the machine.

Caution: Start the extraction system before switching on the Monobrosse.



11. PERIODIC MAINTENANCE

WHEELS (FOR THE ATTENTION OF THE USER)

Periodically remove dirt from the body of the machine and the wheels. Dirt can cause "wave effect" irregularities on the sanded surface.

BEARINGS (FOR THE ATTENTION OF THE AFTER-SALES DEPARTMENT ONLY)

Periodically check to see whether the bearings are worn or damaged, following the schedule below:

Disc After the first 1500 hours of use.

Motor After the first 5,000 hours of use.

12. REPLACEMENT PARTS

It is essential that you always use original spare parts.

The warranty and associated liabilities are invalidated if non-original replacement parts are used or repairs or adjustments are made by an unauthorised person.

13. AFTER-SALES SERVICE

For any question of a technical nature, additional information about our products or to order replacement parts, please contact our after-sales department, which will be pleased to assist you.

14. EMERGENCY SITUATIONS (FOR THE ATTENTION OF THE USER)

SYMPTOMS	CAUSES	REMEDIES
The machine does not work.	The plug is not pushed in properly.	Check the mains socket
	The thermal circuit breaker has tripped.	Allow the machine to cool for 5 or 10 minutes
	There is a motor fault.	Contact the manufacturer
	The mains cable is defective.	Contact the manufacturer
The machine works unevenly.	The sanding accessory is defective.	Replace the sanding discs
	The sanding accessory is not centred on the drive disc.	Check the positioning of the sanding accessory. Where applicable, centre the cleaning accessory on the drive disc.
Poor dust extraction	Extraction skirt incorrectly positioned	Check that the skirt is correctly positioned.
	Extraction system incorrectly positioned or of insufficient size.	Check that the extraction system is in the right position and/or its effectiveness.
The machine lurches.	The sanding accessory is incorrectly fitted.	Check that the cleaning accessory is in the correct position. Where necessary, remove the sanding accessory and re-fit it.

Romus

13- 15 Rue du Taillefer
 ZA Les Pouards
 91160 Champlan France
 Tél.: 01 69 79 69 79